

# 1788 Arthroscopy

The future, in your hands.



## The 1788 Platform

The future, in your hands.

The 1788 Platform is our most sophisticated and comprehensive surgical visualization solution for use in multiple specialties. The 1788 features vibrant images, improved ease of use and enhanced fluorescence imaging capabilities, designed for clearer visualization of perfusion and critical anatomy - when it matters most.

We developed the 1788 with built-in architecture to enable visualization of multiple optical imaging agents. Our goal is to help enhance and customize your OR experience, as you strive to provide the best patient care possible.

**stryker**

The future,  
in **your hands.**

The 1788 Platform is our most sophisticated and comprehensive surgical visualization solution for use in multiple specialties. The 1788 features vibrant images, improved ease of use and enhanced fluorescence imaging capabilities, designed for clearer visualization of perfusion and critical anatomy - when it matters most.

We developed the 1788 with built-in architecture to enable visualization of multiple optical imaging agents. Our goal is to help enhance and customize your operating room experience, as you strive to provide the best patient care possible.



Experience **1 billion colors**



**1688** 16 Million colors

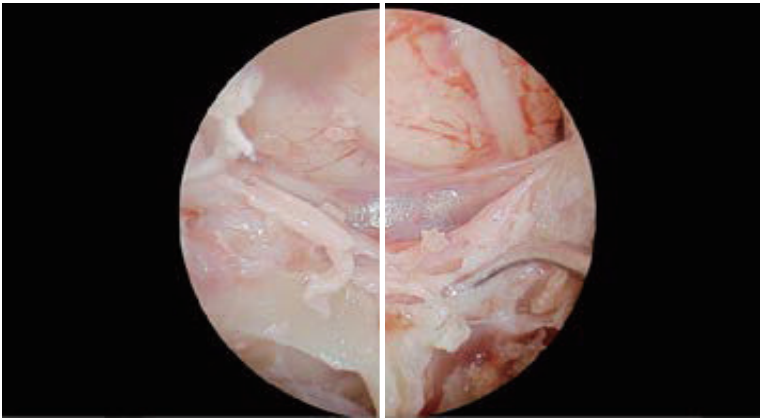
**1788** 1 Billion colors

**62.5x** more colors

**4K Image**



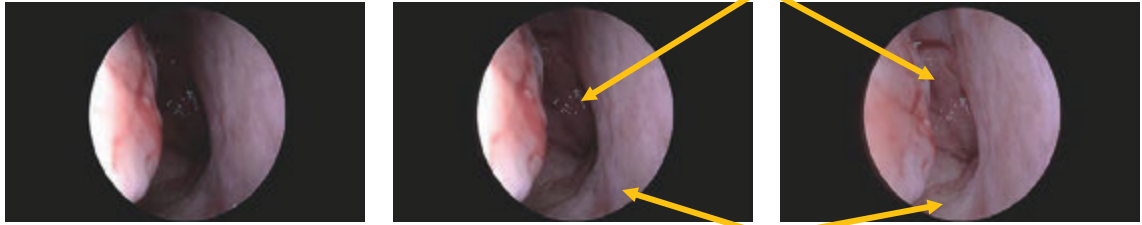
**1788 Image**



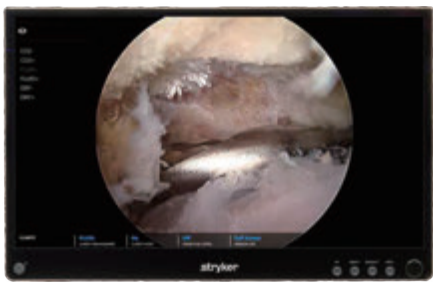
**Custom to you**

A variety of levels enable users to control posterior brightness

**Standard Mode**



4K OLED Surgical Display



32" 4K OLED Surgical Display with VIP Software   
240-031-300

10 Bit  
4K OLED  
Platform



32" 4K OLED Surgical Display



32" 4K OLED Surgical Display  
240-031-300

Precision 4K Arthroscopy



Precision 4K Autoclavable Eyepiece Arthroscopes

Part number	Outer diameter	View direction	Field of view	Working length	Light post direction	Locking mechanism
502-445-010	4.0 mm	0°	105°	165 mm	Standard	Speed-Lock
502-445-030	4.0 mm	30°	105°	165 mm	Standard	Speed-Lock
502-445-070	4.0 mm	70°	105°	165 mm	Standard	Speed-Lock
502-444-010	4.0 mm	0°	105°	140 mm	Standard	Speed-Lock
502-444-030	4.0 mm	30°	105°	140 mm	Standard	Speed-Lock
502-444-045	4.0 mm	45°	105°	140 mm	Standard	Speed-Lock
502-444-070	4.0 mm	70°	105°	140 mm	Standard	Speed-Lock
502-444-130	4.0 mm	30°	105°	140 mm	Reverse cant	Speed-Lock

CROSSFIRE 2  
RF & Shaver System

The two-in-one resection platform enables the ability to operate shaver and RF functionality all in one console, thus saving space on the Arthroscopy cart or Video tower in the Operating Room.



CrossFire 2 Console  
475-100-000i



CrossFire Footswitch  
475-000-100i



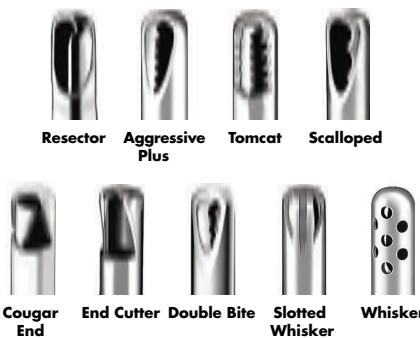
Formula Shaver Handpiece (without buttons)  
375-701-500E



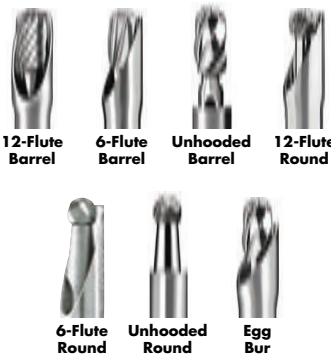
Formula Shaver Handpiece (with buttons)  
375-704-500E

Formula Series Cutters

Standard (5/box)



	3.5 mm	4.0 mm	5.0 mm	5.5 mm
Resector	375-532-000	375-542-000	375-552-000	375-562-000
Aggressive Plus	375-534-000	375-544-000	375-554-000	375-564-000
Tomcat	375-535-000	375-545-000	375-555-000	375-565-000
Scalloped	—	375-546-000	—	—
Cougar End	—	375-541-000	—	—
End	—	375-747-000	—	—
Double Bite	—	375-543-000	—	—
Slotted Whisker	—	375-548-000	—	—
Whisker	—	375-549-000	—	—



Formula Series Burs

Standard (5/box)



	3.5 mm	4.0 mm	5.0 mm	5.5 mm
Standard 12-Flute Barrel	—	375-941-012	375-951-112	375-951-012
Standard 12-Flute Round	—	375-940-012	375-950-112	375-950-012
Aggressive 6-Flute Barrel	—	375-941-000	375-951-100	375-951-000
Aggressive 6-Flute Round	375-930-000	375-940-000	375-950-100	375-950-000
Unhooded 6-Flute Barrel	—	375-941-200	—	375-951-200
Unhooded 6-Flute Round	—	375-940-200	—	375-950-200
Egg Bur 6-Flute	—	—	—	375-952-000

\*제품 Cat No.의 국내 표기상 ‘-E’ 또는 ‘-i’가 표기 될 수 있습니다.



# CROSSFIRE 2

## RF & Shaver System

The two-in-one resction platform enables the ability to operate shaver and RF functionality all in one console, thus saving space on the Arthroscopy cart or Video tower in the Operating Room.



**CrossFire 2 Console**  
475-100-000i



**CrossFire Footswitch**  
475-000-100i



**90-S Cruise**



**90-S Accelerator**



**90-S Max**



**90-S**



**Aardvark**



**50-S Sweep**



**50-S (Angled)**



**30-S (Angled)**

### SERFAS Energy Probes

All probes come with integrated cable and hand controls

#### Suction probes

Part number	Outer diameter	Length	Product name	Description
279-401-200	4.0 mm	135 mm	90-S Cruise	Most complete 90° radio frequency probe offered
279-351-400	4.0 mm	135 mm	90-S Accelerator	Aggressive, all-purpose suction probe
279-401-100	4.0 mm	135 mm	90-S Max	Largest 90° suction probe for increased suction capabilities
279-351-100	3.5 mm	135 mm	90-S	Aggressive, all-purpose suction probe
279-251-101	2.5 mm	135 mm	Aardvark	Bendable suction probe for tight joint spaces
279-351-650	3.5 mm	133 mm	50-S Sweep	Most complete 50° radio frequency probe offered
279-351-250	3.5 mm	135 mm	50-S	50° all-purpose suction probe for use in posterior knee procedures
279-351-230	3.5 mm	135 mm	30-S	30° beveled all-purpose suction probe

\*제품 Cat No.의 국내 표기상 '-E' 또는 '-G'가 표기 될 수 있습니다.

# CrossFlow Integrated Arthroscopy Pump



**CrossFlow Integrated Arthroscopy Pump**  
450-000-000i

**CrossFlow Footswitch**  
450-000-500

### CrossFlow

<b>Pump system</b>	<b>450-000-000</b>	CrossFlow Integrated Arthroscopy Pump
	<b>450-000-500</b>	CrossFlow Footswitch
<b>Tubing</b>	<b>450-000-100</b>	CrossFlow Inflow Cassette Tubing
	<b>450-000-200</b>	CrossFlow Outflow Cassette Tubing
	<b>450-000-300</b>	CrossFlow Integrated Cassette Tubing
	<b>450-000-115</b>	Day-Use Tubing
	<b>450-000-125</b>	Patient-Use Tubing
<b>Accessories</b>	<b>P17275</b>	CrossFlow Pump Competitor Integration Power Cables
	<b>6000-001-020</b>	2 m Firewire Cable

\*제품 Cat No.의 국내 표기상 '-E' 또는 '-G'가 표기 될 수 있습니다.

**New imaging agent**

**Fluorescence, re-imagined**  
Improved SPY Imaging modes.

**Experience 1 billion colors**  
Vibrant visualization.

**Balanced Lighting**  
Auto-light and Tone Modes.

**Standardization in specialties**  
Harmonize your OR.

# 1788

## Arthroscopy



**stryker**